



*Byland*  
Polled Shorthorns

**DECEMBER 9**

**12:00 NOON**

**PAINT VALLEY FARMS SALE FACILITY**

**MILLERSBURG, OHIO**

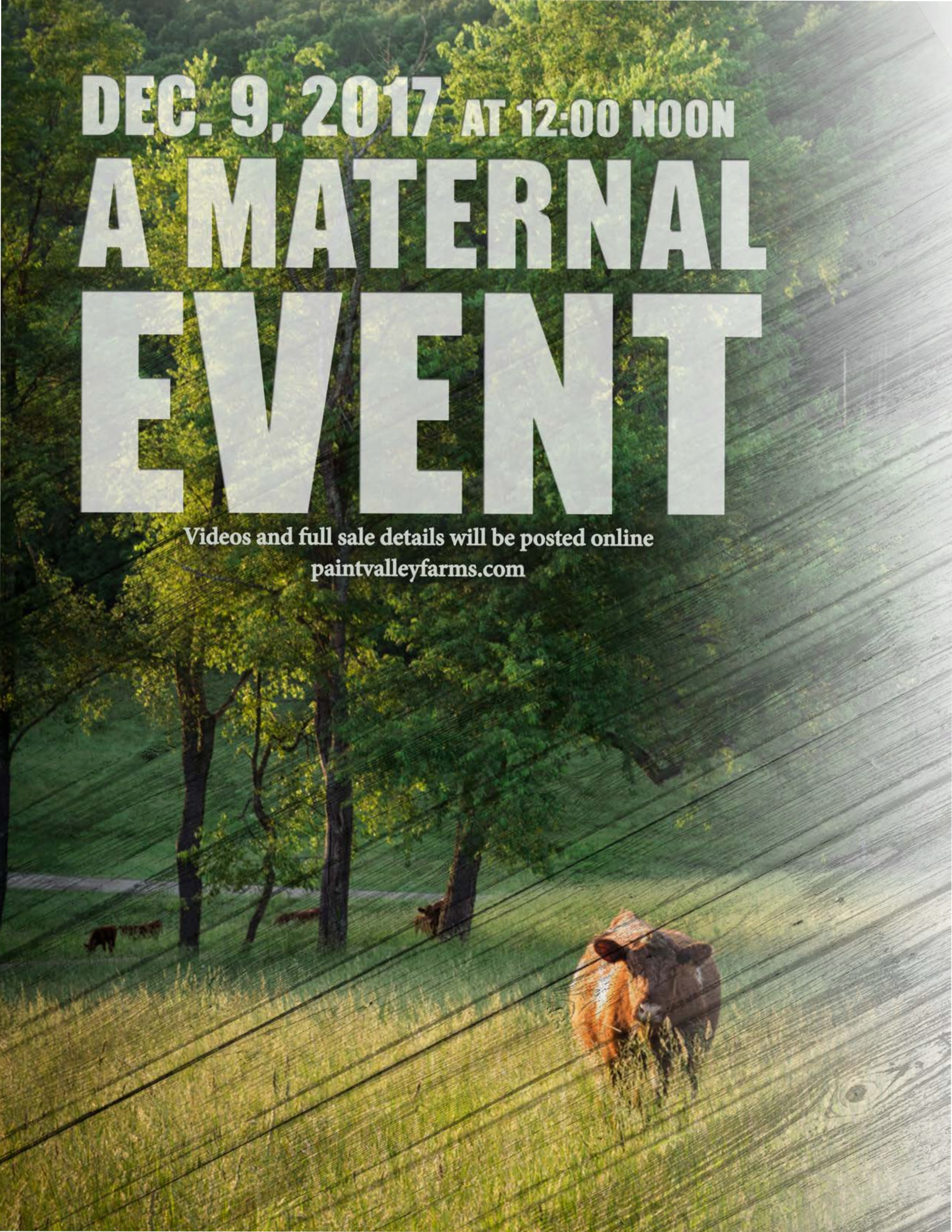
**A MATERNAL  
EVENT**



**DEC. 9, 2017 AT 12:00 NOON**

# **A MATERNAL EVENT**

Videos and full sale details will be posted online  
[paintvalleyfarms.com](http://paintvalleyfarms.com)



**SALE LOCATION**

Paint Valley Farms  
10550 Township Road 262, Millersburg, OH 44654

**SCHEDULE OF EVENTS**

**FRIDAY, DECEMBER 8**  
Afternoon Cattle will be on display  
**SATURDAY, DECEMBER 9**  
9:00 AM Cattle will be on display  
11:00 AM Complimentary Meal  
12:00 Noon A Maternal Event 2017

**BID ONLINE**

LiveAuctions.TV

**AUCTIONEER,** Kevin Wendt

**SALE REPRESENTATIVES**

Alan Sears, Sears Marketing Services .....970-396-7521  
Darryl Rahn, Shorthorn Country .....217-473-1124  
Chris Smith.....217-370-1908

**SALE DAY PHONES**

Lee Miller - PVF .....330-231-6834  
Don Washburn - PVF.....219-869-0758  
Gretchen Straits - PVF .....330-473-2111  
Jason Andrews - PVF .....330-465-4796  
Jeff Byers - Byland .....419-651-7293  
Jon Byers - Byland .....419-651-0501  
Kenny Flinger - Byland.....419-685-3314

**LODGING**

Comfort In Millersburg  
1102 Glen Dr, Millersburg, Ohio 44654 .....330-674-7400

Hotel Millersburg  
35 W Jackson St, Millersburg, OH 44654.....330-674-1457

The Club @ Berlin Resort  
5330 Co Rd 201, Millersburg, OH 44654 .....330-893-3000

**DIRECTIONS**

State Rt 39 west of Millersburg 6 miles to State Rt 754 north 1 mile, turn right (east) onto County Rd 320 a 1/2 mile and then right (south) on Twp Rd 262. Sale is 1/2 mile on the right.  
75 miles south of Cleveland, OH  
75 miles northeast of Columbus, OH  
130 miles west of Pittsburgh, PA



SALE MANAGEMENT BY:  
**Aegerter Marketing Services, Inc.**  
Jeff Aegerter (402) 641-4696  
jeff.aegerter@gmail.com

*the Miller's*



*the Byer's*



*Welcome* to the second annual Maternal Event, presented to you by Paint Valley Farms and Byland Polled Shorthorns. We look forward to your visit and are proud to showcase the fruits of our labor. The sale offering before you is the culmination of years of breeding and the constant will to produce the very best.

Our families invite you to join us December 9, as we sell 70 Shorthorn females from the core of our herds. If we can assist you in any way, from selection and delivery to helping you with personal travel plans for the weekend, please do not hesitate to call. We look forward to seeing you at the 2017 Maternal Event.

*Sincerely,*  
*Lee Miller, Dr. Jeff Byers & Jon Byers*



**Paint Valley Farms**

Lee Miller & Family  
10550 Twp. Rd. 262  
Millersburg, OH 44654  
330.231.6834 - Mobile



**Byland Polled Shorthorns**

Mrs. L Eugene Byers  
Dr. Jeff Byers • Jon Byers  
500 Twp. Rd. 2802  
Loudonville, OH 44842  
Jeff 419.651.7293  
Jon 419.651.0501



## 1 JSF ROSEWOOD 119W

X4164791 • 8/26/09 • Polled • 119W • Red w/ White Marks

BYLAND AXIS 1D85

**SIRE** SBR TSUNAMI 20T

SBR DEE 232

KL OVERSEER

**DAM** KL ROSEWOOD 594

KL ROSEWOOD 9110

CED	BW	WW	YW	MK	TM	CEM	ST	sCEZ	sBMI	\$F
7	2	55	53	25	53	2	13	27.11	128.47	53.06

Bred A.I. on 5/30 to JSF MCCOY. Due 3/9/18. 119W is possibly the most productive of the Tsunami daughters we purchased from Jungles in 2009. She is the dam of PVF Gravity, herd sire for Dixon Farms in Alberta, Canada and the dam of the high selling cow, PVF Rosewood 47Z that sold in last year's sale to the Parnell family from Alabama. She offers you volume and fleshing ability with a strong production record. She is bred back to McCoy for a full sib to Gravity!



PVF Gravity, son of Lot 1.



# 1A **PVF ROSEWOOD 59D**

X4233079 • 3/27/16 • Polled • 59D • Red w/ White Marks

STUDER'S TAYLOR MADE 7Y

**SIRE** LEVELDALE RINGO 337A

LEVELDALE ROSEWOOD 809U

SBR TSUNAMI 20T

**DAM** JSF ROSEWOOD 119W

KL ROSEWOOD 594

CED	BW	WW	YW	MK	TM	CEM	ST	sCEZ	sBMI	\$F
9	2.6	55	63	20	48	2	11	31.12	113.52	52.31

Exposed to MURIDALE CONTROL. Due late March 2018. Here is a great opportunity to own a maternal sister to Gravity backed by a proven cow family with an excellent production record. She is feminine in design, with depth of body and volume of rib. As this heifer matures she continues to look like her dam with strong maternal qualities.



PVF Rosewood 47Z, daughter of Lot 1



## 2 BYLAND JENNY 3G4

X4204770 • 2/12/13 • Polled • 3B4 • Red w/ White Marks

SBR TSUNAMI 20T

**SIRE** JSF GAUGE 137W

KL MINA STAR 1051

FSF PROUD JAZZ 855

**DAM** BYLAND JENNY 1J15

BYLAND JENNY 9EM1

CED	BW	WW	YW	MK	TM	CEM	ST	sCEZ	sBMI	\$F
13	-0.9	43	35	25	46	8	12	51.50	142.19	49.79

Exposed to **STUDER'S UNIVERSAL**, Due early to mid March, 2018. What a cow she is... Deep bodied, wide made, a good udder, and structure and a great producer! Her first calf is now a young cow for the Bline family in OH, her second calf Byland Broadway, sold last year to Hugh Mooney in the New Brand Bull Sale. This year she has an excellent Universal daughter that we are retaining. She ranks in the top 3% of the breed for \$CEZ & \$BMI.



Byland Broadway, son of Lot 2.



**LOT 3**



**LOT 4**

**3 BYLAND BONNIE BUD 3G11**

X4204743 • 3/5/13 • Polled • 3B11 • Red w/ White Marks

SBR TSUNAMI 20T

**SIRE** JSF GAUGE 137W

KL MINA STAR 1051

JSF RELOAD 32T X

**DAM** BYLAND BONNIE BUD 1R65

BYLAND BONNIE BUD 5GR50

CED	BW	WW	YW	MK	TM	CEM	ST	sCEZ	\$BMI	\$F
9	0.8	60	62	30	60	10	15	33.62	155.35	59.09

Exposed to **STUDER'S UNIVERSAL**. Due early March 2018. A great, productive young cow. The Gauge daughters are fantastic cows with great udders. This cow has proven herself with 3 calves in 3 years. The first calf, a steer, weighed 1298 at 365 days of age. Her second calf is a bred heifer we are keeping to replace her. This year she had a heifer that with an adjusted 205 day weight of 665 lbs. She ranks in the top 1% of the breed for \$BMI, Milk, TM and CEM with great growth EPD's.

**4 BYLAND VELVET 3G38**

X4204757 • 3/21/13 • Polled • 3B38 • Red w/ White Marks

SBR TSUNAMI 20T

**SIRE** JSF GAUGE 137W

KL MINA STAR 1051

BYLAND OUTLOOK 5RR32 ET

**DAM** BYLAND VELVET 80L68

BYLAND VELVET 5RD8

CED	BW	WW	YW	MK	TM	CEM	ST	sCEZ	\$BMI	\$F
10	1.2	56	54	28	56	10	11	36.20	149.96	52.09

Exposed to **STUDER'S UNIVERSAL**. Due mid March 2018. Another Gauge daughter with a great udder that has weaned a calf every year. She is a workhorse for a cow as her first bull is a herd bull for Kauffman Farms in Ohio. This year she had a heifer that weaned off with an adjusted 205 day weight of 665 lbs. She ranks in the top 3% of the breed for \$BMI, TM & CEM.

# BRED COWS



**LOT 5**



**LOT 6**

## 5 BYLAND AUGUSTA 4G3

X4219213 • 1/16/14 • Polled • 4G3 • Red

SBR TSUNAMI 20T

**SIRE** JSF GAUGE 137W

KL MINA STAR 1051

JSF RELOAD 32T X

**DAM** BYLAND AUGUSTA 1R103

BYLAND AUGUSTA 7G113

CED	BW	WW	YW	MK	TM	CEM	ST	\$CEZ	\$BMI	\$F
9	0.6	60	62	31	61	8	14	33.70	153.70	57.73

Exposed to **STUDER'S UNIVERSAL**, Due early to mid March, 2018. Just a 3 year old Gauge daughter, her first calf sired by McCoy sells as Lot 61. 4G3 ranks in the top 1% of the breed for \$BMI, top 15% for \$F, and top 20% for \$CEZ.

## 6 BYLAND ELLEN 3G2

X4204742 • 1/30/13 • Polled • 3B2 • Red

SBR TSUNAMI 20T

**SIRE** JSF GAUGE 137W

KL MINA STAR 1051

JSF RELOAD 32T X

**DAM** BYLAND ELLEN 1R6

BYLAND ELLEN 8RW37

CED	BW	WW	YW	MK	TM	CEM	ST	\$CEZ	\$BMI	\$F
10	-0.1	56	52	22	50	7	14	36.41	150.23	56.24

Exposed to **STUDER'S UNIVERSAL**. Due mid April 2018. Another 3 year old Gauge daughter with high \$ Indexes across the board. Very maternal with great maternal EPD's. From the Ellen cow family as her dam and daughter are still in production here.



## 7 BYLAND AUGUSTA BRAE 2G22

4191305 • 3/6/12 • Horned • 2B22 • Red

SBR TSUNAMI 20T

**SIRE** JSF GAUGE 137W

KL MINA STAR 1051

RB EAGLE 226TH

**DAM** BYLAND AUGUSTA BRAE 8E2

BYLAND AUGUSTA BRAE 6M11

CED	BW	WW	YW	MK	TM	CEM	ST	\$CEZ	\$BMI	\$F
12	-0.2	53	42	25	51	10	13	48.31	165.53	54.44

Exposed to LEVELDALE ROLEX, Due mid to late March, 2018. Another young Gauge daughter out of an RB Eagle 226 cow. She is a bit more moderate in size, but deep, thick, and super easy fleshing. She has been very productive and ranks in the top 1% of the breed for \$BMI, top 3% for \$CEZ, and the top 25% for \$F. She has a fantastic McCoy daughter selling as Lot 58.



## 8 BYLAND AUGUSTA 0E3

X4168308 • 2/13/10 • Polled • 0B3 • Red

BYLAND EAGLE F58

**SIRE** RB EAGLE 226TH

RB RUBY 126TH

MEL-BAR RODEO DRIVE 347

**DAM** BYLAND AUGUSTA 5RD3

BYLAND AUGUSTA 2RR119

CED	BW	WW	YW	MK	TM	CEM	ST	\$CEZ	\$BMI	\$F
6	4.7	80	95	20	60	7	13	15.04	157.07	68.86

Exposed to BYLAND GLOBAL, Due mid March 2018. A high performance RB Eagle 226 daughter out of a Mel-Bar Rodeo Drive cow. She ranks in the top of the breed for weaning and yearling EPD's. She also ranks in the top 1% of the breed for \$BMI and \$F. She been a very productive cow and raised 6 calves naturally. We retained her 2017 heifer by Global.



## 9 BYLAND ELLEN 2R73

X4193846 • 4/21/12 • Polled • 2B73 • Red w/ White Marks

K-KIM REVAMP

**SIRE** JSF RELOAD 32T X

MR DIAMOND 104L

JSF REAL WORLD 16R X

**DAM** BYLAND ELLEN 8RW37

BYLAND ELLEN 4RD14

CED	BW	WW	YW	MK	TM	CEM	ST	\$CEZ	\$BMI	\$F
5	-0.3	62	75	14	45	4	17	17.35	128.36	58.44

Bred A.I. on 5/25 to MURIDALE MURANGO. Due 3/1/18. A high growth and maternal trait EPD daughter of JSF Reload 32T. The Reload daughters are great uddered, very productive, sound cows that are very maternal. She has given us 4 natural calves as we have retained a 2 year old daughter. Her 2017 heifer calf weaned off a 205 weight of 620 lbs.



# BRED COWS



## 10 BYLAND CORONITA 2RW13

X4191298 • 2/29/12 • Polled • 2B13 • Red w/ White Marks

RB EAGLE 255TH

**SIRE** JSF REAL WORLD 16R X

JR PRINCESS 42K

BYLAND GOLD RIDER 3116 ET

**DAM** BYLAND CORONITA 5GR86

BYLAND CORONITA 2I56

CED	BW	WW	YW	MK	TM	CEM	ST	sCEZ	sBMI	sF
1	3.9	64	79	13	45	6	13	2.54	120.51	52.44

Exposed to JSF WALL STREET, Due late March to early April, 2018. Productive working cow here that is very maternal with high growth rate EPD's. We have a 2 year old daughter in production and a bred heifer we are retaining. Her 2017 bull calf weaned off a 205 weight of 660 lbs.



## 11 BYLAND ELLEN 3CR14

X4204745 • 3/12/13 • Polled • 3B14 • Red w/ White Marks

M BAR CASTLEROCK 722T

**SIRE** M BAR CASTLEROCK 019X

M BAR COUNTESS 9041 RC

BYLAND DOUBLE GOLD

**DAM** BYLAND ELLEN 9DG6

BYLAND ELLEN 7RW57

CED	BW	WW	YW	MK	TM	CEM	ST	sCEZ	sBMI	sF
1	5.3	63	85	18	49	-4	9	.40	90.69	53.74

Exposed to LEVELDALE ROLEX, Due mid to late-March, 2018. A Castlerock daughter with extra shape and bone. We have retained her 2017 heifer calf by McCoy. She offers high growth EPD's.



## 12 BYLAND KATRINA 9E31

4160008 • 3/28/09 • Horned • 9B31 • Red

BYLAND EAGLE F58

**SIRE** RB EAGLE 226TH

RB RUBY 126TH

BYLAND GOLD RIDER 3116 ET

**DAM** BYLAND KATRINA 6GR38

BYLAND KATRINA 2GS88

CED	BW	WW	YW	MK	TM	CEM	ST	sCEZ	sBMI	sF
5	4.2	52	59	16	42	9	19	20.67	129.80	55.12

Bred A.I. on 5/25 to STUDER'S TAYLOR MADE. Due 3/1/18. 9E31 is an own daughter of RB Eagle 226 and is the oldest and most proven cow in the sale. She has been quite productive by producing 6 bull calves and a heifer for us.



**LOT 13**



**LOT 13A**

**13 BYLAND ELLEN 4P86**

X4219209 • 4/12/14 • Polled • 4B86 • Red

WAUKARU PATENT 8161

**SIRE** SBF PATENT'S IMAGE 43Y

AR SU LU ORANGE BLOSSOM 611

CF BIG BROWN X

**DAM** BYLAND ELLEN 0BB46

BYLAND ELLEN 7RW87

CED	BW	WW	YW	MK	TM	CEM	ST	sCEZ	sBMI	\$F
-3	8.2	94	122	9	56	-2	10	-20.01	125.16	68.91

Exposed to BYLAND GLOBAL. Due mid March 2018. If performance is your goal then this is your girl. She is in the top 1% of the breed for Weaning and Yearling EPD's! She is also in the top 1% of the breed for \$F and 20% for \$BMI. Her yearling daughter sells as a bred heifer as Lot 65, while her 2017 daughter sells as Lot 13A.

**13 BYLAND ELLEN 7SC46**

X4252823 • 3/10/17 • Polled • 7B46 • Red

**A**

EIONMOR MARQUIS 86G

**SIRE** STUDER'S SNAPCHAT 22B

MURIDALE RED JAY 22Z

SBF PATENT'S IMAGE 43Y

**DAM** BYLAND ELLEN 4P86

BYLAND ELLEN 0BB46

CED	BW	WW	YW	MK	TM	CEM	ST	sCEZ	sBMI	\$F
3	4.3	74	94	14	51	0	10	7.30	121.46	61.58

Excellent growth EPD's! An outstanding red, polled heifer that is gentle. The Snapchat calves are massive in volume and substance. Her actual BW was 84 lbs. while her adjusted 205 day wean weight was a whopping 781 lbs. This heifer is the real deal!

# OPEN HEIFERS



**LOT 14**



**LOT 15**

## 14 BYLAND ELLEN 7U16

X4252793 • 2/21/17 • Polled • 7B16 • Roan

SASKVALLEY TRADITION 106T

**SIRE** STUDER'S UNIVERSAL 10B

DSF PRIMROSE 55S

JSF MCCOY 39Z

**DAM** BYLAND ELLEN 4M18

BYLAND ELLEN 0BB88

CED	BW	WW	YW	MK	TM	CEM	ST	sCEZ	sBMI	sF
5	3.5	72	86	18	54	4	9	15.78	143.20	63.55

This is a can't miss opportunity! What a great heifer. She has the look, the style, and the grace to make it happen. Her performance numbers are equally outstanding. A BW of 87 lbs. and adjusted 205 weaning weight of 650 lbs. She is in the top 10% of the breed for weaning and yearling EPD as well as a high \$BMI. Her dam is perhaps our favorite McCoy daughter.

## 15 BYLAND ELLEN 7M44

X4252822 • 3/9/17 • Polled • 7B44 • Red

JAKE'S PROUD JAZZ 266L

**SIRE** JSF MCCOY 39Z

WR SHADOW MO 644

JSF GAUGE 137W

**DAM** BYLAND ELLEN 2G60

BYLAND ELLEN 0R82

CED	BW	WW	YW	MK	TM	CEM	ST	sCEZ	sBMI	sF
14	-2.9	45	45	25	48	7	10	52.74	146.35	48.91

This heifer has brood cow written all over her. A McCoy out of a Gauge cow... A great match giving the stylish look and quality along with that brood cow performance. Check out her \$BMI and \$CEZ that are in the top 3% of the breed. She had a BW of 72 lbs. and an adjusted 205 day wean weight of 619 lbs.

# 16 BYLAND CINDY BEAUTY 7M60

X4252838 • 3/19/17 • Polled • 7B60 • Roan

JAKE'S PROUD JAZZ 266L

**SIRE** JSF MCCOY 39Z

WR SHADOW MO 644

JSF RELOAD 32T X

**DAM** BYLAND CINDY BEAUTY 1R2

BYLAND CINDY BEAUTY 6GR27

CED	BW	WW	YW	MK	TM	CEM	ST	sCEZ	sBMI	sF
8	1.3	51	57	21	47	5	12	30.27	130.89	49.66

Possible show heifer here as McCoy really put the style in this Cindy Beauty! Her dam is one of our very best Reload daughters. She had a BW of 90 lbs. and an adjusted 205 day wean weight of 627 lbs.



# 17 BYLAND ELLEN 7GL99

4253111 • 4/5/17 • Horned • 7B99 • Red

JSF MCCOY 39Z

**SIRE** BYLAND GLOBAL 5M10

BYLAND JENNY 3G33

JSF REAL WORLD 16R X

**DAM** BYLAND ELLEN 9RW11

BYLAND ELLEN 5C67

CED	BW	WW	YW	MK	TM	CEM	ST	sCEZ	sBMI	sF
7	3.1	66	71	22	55	5	6	23.28	155.23	55.74

Here is the first Global to sell and she is well deserving of that honor. Stylish, big volume with an extra shot of bone and eye appeal. Her dam is one of the very best Real World daughters on the farm. Take a close look at her stats as she has very balanced EPD's. She is in the top 1% for \$BMI of 155! She had a BW of 90 lbs. and an adjusted 205 day wean weight of 663 lbs. This is an important investment.



# 18 BYLAND KATRINA 7GL103

X4253115 • 4/7/17 • Polled • 7103 • Red & White

JSF MCCOY 39Z

**SIRE** BYLAND GLOBAL 5M10

BYLAND JENNY 3G33

JSF RELOAD 32T X

**DAM** BYLAND KATRINA 0R62

BYLAND KATRINA OALL1

CED	BW	WW	YW	MK	TM	CEM	ST	sCEZ	sBMI	sF
9	0.7	58	67	25	54	5	12	33.02	146.21	54.57

Fancy deluxe. Super style, volume, and substance. Stamped with Global's eye appeal and value. She had a BW of 80 lbs. and an adjusted 205 day wean weight of 610 lbs. She has a high \$BMI. She is stamped to be a great production cow.



# OPEN HEIFERS



## 19 PVF ROSE 12E

X4249757 • 2/1/17 • Polled • 12E • Roan

STUDER'S TAYLOR MADE 7Y

**SIRE** LEVELDALE RINGO 337A

LEVELDALE ROSEWOOD 809U

FSF JAZZ LEADER 918 ET

**DAM** PVF ROSE 25Y

JSF ROSE 130W

CED	BW	WW	YW	MK	TM	CEM	ST	sCEZ	sBMI	\$F
10	1.3	59	65	15	44	3	12	35.02	124.55	55.38

You really have to appreciate the power Ringo added to this heifer. She is long and level, while still having depth of body and being fluid in her movement with a big foot. Her dam has raised 2 different high selling bulls including PVF Credence. If you are looking for a supreme cow prospect, pick this one.



PVF Credence, maternal sib to Lot 19.

## 20 PVF ROSEWOOD 02E

X4249747 • 1/23/17 • Polled • 2E • Red

STUDER'S TAYLOR MADE 7Y

**SIRE** LEVELDALE RINGO 337A

LEVELDALE ROSEWOOD 809U

FSF JAZZ LEADER 918 ET

**DAM** PVF ROSEWOOD 40A

JSF ROSEWOOD 131W

CED	BW	WW	YW	MK	TM	CEM	ST	sCEZ	sBMI	\$F
11	0.2	51	59	13	39	2	12	41.02	110.40	50.21

Here is another heifer out of the productive Rosewood cow family. She has the balance and eye appeal we are always looking for with that extra rib shape and volume in a smooth package. She is stout and fancy!



## 21 PVF NEVERLAND NITA 6E

X4249751 • 1/26/17 • Polled • 6E • Roan

STUDER'S TAYLOR MADE 7Y

**SIRE** LEVELDALE RINGO 337A

LEVELDALE ROSEWOOD 809U

FSF JAZZ LEADER 918 ET

**DAM** PVF NEVERLAND NITA 39A

JSF NEVERLAND NITA 120W

CED	BW	WW	YW	MK	TM	CEM	ST	sCEZ	sBMI	\$F
14	-1.3	54	63	15	42	3	11	47.41	112.89	50.53

Another deep bodied heifer in a smooth attractive pattern. Her dam is a full sib to the popular JSF/PVF Guardian bull for the Kretzmeier family in Indiana. Her grand dam is one of the best cows here in the valley.



## 22 PVF STYLIST 702

X4258908 • 3/4/17 • Polled • 702 • Red w/ White Marks

MAPLETON COLONEL GUS 71U

**SIRE** JSF KING 116B

JSF GOLDEN CHAIN 25X

JM VORTEC ET

**DAM** PVF STYLIST 505 ET

STOUT GOLD STYLIST 307

CED	BW	WW	YW	MK	TM	CEM	ST	sCEZ	sBMI	\$F
2	6.6	55	62	18	45	-3	5	5.94	105.13	50.72

Here is an exceptional heifer sired by JSF King. If you are looking for a show heifer with a future, look in here as she is long bodied and soft at the ground. Her maternal grand dam is the Stylist 307 donor from Stout's in OK.



# OPEN HEIFERS



## 23 PVF SHEZA DANDY 46E

X4249794 • 3/24/17 • Polled • 46E • Roan

STUDER'S TAYLOR MADE 7Y

**SIRE** LEVELDALE RINGO 337A

LEVELDALE ROSEWOOD 809U

COMPLETE

**DAM** GF SHEZA DANDY CP 214

GF SHEZA DANDY MT 613

CED	BW	WW	YW	MK	TM	CEM	ST	sCEZ	sBMI	sF
6	3.2	53	64	8	35	1	6	21.29	95.15	49.58

46E is another fancy heifer that is long and extended and will look good on the tan bark. Her dam was 2nd in class for Whitney at NAILE a few years ago. Add the power and function that Ringo adds to her and you know she will make a great female.



## 24 PVF LISA FERN 52E

4250247 • 4/3/17 • Horned • 52E • Red w/ White Marks

STUDER'S TAYLOR MADE 7Y

**SIRE** LEVELDALE RINGO 337A

LEVELDALE ROSEWOOD 809U

SHERWOODS RED VISION 576M ET

**DAM** PVF LISA FERN 13U

HILAND LISA FERN C05

CED	BW	WW	YW	MK	TM	CEM	ST	sCEZ	sBMI	sF
4	3.5	53	67	14	40	-2	6	13.94	88.50	49.92

This heifer did not help herself on photo day. Yes, she is green and needs a little time much like her maternal sib that was the high selling heifer calf in last year's sale. This April heifer is a maternal sib to the Reserve National Champion Shorthorn steer and Champion Shorthorn steer at the Ohio State Fair for Whitney in 2014.



## 25 PVF LINDSEY 55E

AR4250609 • 4/9/17 • Horned • 55E • Red

STUDER'S TAYLOR MADE 7Y

**SIRE** LEVELDALE RINGO 337A

LEVELDALE ROSEWOOD 809U

OCC RALSTON R3

**DAM** DLF LINDSEY RALSTON 9R44

HILAND LINDSEY SP04

CED	BW	WW	YW	MK	TM	CEM	ST	sCEZ	sBMI	sF
3	7.1	61	85	15	46	-2	8	7.72	92.70	55.44

This ¾ blood Shorthorn Plus heifer has as much muscle and shape as any in the sale with some added performance and style. Her dam is a very impressive beef cow with a near perfect udder.



# A MATERNAL BRAND BULL SALE



**BULL SALE MARCH 8, 2018**

**SELLING 50 SHORTHORN BULLS**

**NEW FORMAT! LIVE SALE HELD AT**

**Paint Valley Farms Sale Facility,**

**Millersburg, Ohio**

# BRED HEIFERS



## 26 PVF MIGHTY NITA 86C

X4223249 • 9/13/15 • Polled • 86C • Roan

MURIDALE HUEY 8U ET

**SIRE** BALMORAL OAKS EAGLE 9X

BALMORAL OAKS DORIS 1U

SBR TSUNAMI 20T

**DAM** JSF MIGHTY NITA 145W

KL MIGHTY NITA

CED	BW	WW	YW	MK	TM	CEM	ST	sCEZ	sBMI	\$F
7	2.1	45	46	25	47	4	13	30.28	123.98	50.76

Exposed to MURIDALE CONTROL. Due May 2018. This is an opportunity to own what may be the finest bred heifer we have produced. Sired by the great Balmoral Oaks Eagle bull and out of a Tsunami daughter. This one has tremendous volume of rib with plenty of muscle with the bone and foot size to stay productive for years.



Balmoral Oaks Eagle 9X, sire of Lots 26-28



**LOT 27**



**LOT 28**

**27 PVF VELVET 93C**

X4223236 • 9/24/15 • Polled • 93C • Roan

MURIDALE HUEY 8U ET

**SIRE** BALMORAL OAKS EAGLE 9X

BALMORAL OAKS DORIS 1U

JSF/RB IMPROVEMENT 56W

**DAM** JSF VELVET 125Z

BYLAND VELVET 7E71

CED	BW	WW	YW	MK	TM	CEM	ST	sCEZ	sBMI	sF
10	0.3	46	45	12	35	6	10	38.30	125.18	52.11

Exposed to MURIDALE CONTROL. Due May 2018. Another beautiful Eagle daughter with depth of body and volume out of the Byland Velvet cow family. Study the \$ indexes on this heifer and you know she brings you maternal function and calving ease. She is one of my favorites in the sale.

**28 PVF TASHA 94C**

X4223252 • 9/25/15 • Polled • 94C • Roan

MURIDALE HUEY 8U ET

**SIRE** BALMORAL OAKS EAGLE 9X

BALMORAL OAKS DORIS 1U

JAKE'S PROUD JAZZ 266L

**DAM** JSF TASHA 66X

JSF TASHA 41T

CED	BW	WW	YW	MK	TM	CEM	ST	sCEZ	sBMI	sF
9	0	41	43	19	39	4	10	36.03	118.70	49.19

Exposed to MURIDALE CONTROL. Due early April 2018. A deep bodied Eagle daughter in a more moderate package. Her dam 66X is a beautiful cow that has raised a few good ones here. Stop by our pens in Denver and see her brother.

# BRED HEIFERS



## 29 PVF CLOUD NINE NITA 101C

X4223951 • 10/2/15 • Polled • 101C • Red

JAKE'S PROUD JAZZ 266L

**SIRE** JSF MCCOY 39Z

WR SHADOW MO 644

SBR TSUNAMI 20T

**DAM** JSF NIFTY NITA 126W

KL NIFTY NITA 3F8

CED	BW	WW	YW	MK	TM	CEM	ST	sCEZ	sBMI	\$F
13	-1.8	45	46	22	44	7	10	50.53	139.96	48.12

**Bred A.I. on 5/8 to PVF CREDENCE. Due 2/15/18.** Last fall we made the decision to carry all the fall heifers over to the spring breeding season so that we could offer them in this sale. This heifer sired by McCoy out of a Tsunami cow has that depth and volume of a brood cow and is at the top of the breed in the \$ indexes. Note that she is bred to Credence.



## 30 PVF NITA 91C

X4223242 • 9/21/15 • Polled • 91C • Red

JAKE'S PROUD JAZZ 266L

**SIRE** JSF MCCOY 39Z

WR SHADOW MO 644

WAUKARU GOLD ELEMENT 156

**DAM** JSF NITA 114W

KL NO NONSENSE NITA

CED	BW	WW	YW	MK	TM	CEM	ST	sCEZ	sBMI	\$F
13	-2	40	42	28	48	7	9	51.40	138.82	44.63

**Exposed to MURIDALE CONTROL. Due early April 2018.** Another McCoy daughter that offers strong \$ indexes and maternal function. I like the style this heifer offers along with the productivity of the Nita cow family. Her dam and grand dam are both productive cows in our fall program. Her mating to our calving ease heifer bull Muridale Control should be pretty neat.



## 31 PVF NONONSENSE NITA 79C

X4223251 • 9/12/15 • Polled • 79C • Red

JAKE'S PROUD JAZZ 266L

**SIRE** JSF MCCOY 39Z

WR SHADOW MO 644

GFS RED CLOUD 183

**DAM** KL NO NONSENSE NITA

KL MIGHTY NITA

CED	BW	WW	YW	MK	TM	CEM	ST	sCEZ	sBMI	\$F
11	-0.4	41	46	26	46	6	9	42.92	131.16	45.94

**Exposed to MURIDALE CONTROL. Due early March 2018.** A McCoy out of 5F50 which is also the maternal grand dam of Lot 30. A few years ago we bought the rest of the JSF fall calving cows and when we did so we agreed to include a few older cows. This heifer's dam 5F50 was one of those older cows. She is now 12 and has calved every year since.

## 32 PVF ROSEWOOD 105C

X4224777 • 10/27/15 • Polled • 105C • Roan

JAKE'S PROUD JAZZ 266L

**SIRE** JSF MCCOY 39Z

WR SHADOW MO 644

SBR TSUNAMI 20T

**DAM** JSF ROSEWOOD 123W

KL ROSEWOOD 327TH

CED	BW	WW	YW	MK	TM	CEM	ST	sCEZ	sBMI	\$F
9	2.3	54	63	22	49	4	10	33.21	133.19	52.71

Bred A.I. on 5/10 to PVF CREDENCE. Due 2/17/18. A bigger made, attractive McCoy daughter out of a Tsunami cow that offers strong \$ indexes. She is one of the more powerful heifers in the sale and with the mating to Credence there is the potential for a quick return on your investment.



## 33 PVF MAUDE 95C

X4223241 • 9/25/15 • Polled • 95C • Roan

JAKE'S PROUD JAZZ 266L

**SIRE** JSF MCCOY 39Z

WR SHADOW MO 644

GFS RED CLOUD 028

**DAM** JSF MAUDE 0432C

DEES SB MAUDE 503B

CED	BW	WW	YW	MK	TM	CEM	ST	sCEZ	sBMI	\$F
13	-1.5	58	63	19	48	4	8	45.17	147.04	53.63

Bred A.I. on 5/8 to PVF CREDENCE. Due 2/15/2018. This heifer offers a unique pedigree being out of the powerful Maude 0432C from Jungles. Her dam, 0432C has been as productive as a thorough bred and at the age of 13 is still in production here with another calf on her now. This heifer excels with an excellent birth weight to growth spread and a high \$BMI.



## 34 PVF PRINCESS 83C

X4223240 • 9/12/15 • Polled • 83C • Red

JAKE'S PROUD JAZZ 266L

**SIRE** JSF MCCOY 39Z

WR SHADOW MO 644

MAXTON BOLD CRUSADER

**DAM** WOLF RIDGE PRINCESS 88TH

WOLF RIDGE PRINCESS 78R

CED	BW	WW	YW	MK	TM	CEM	ST	sCEZ	sBMI	\$F
14	-3.3	37	41	23	42	6	5	53.17	130.05	43.99

Exposed to MURIDALE CONTROL. Due late March 2018. The dam to this heifer is from the Kaper herd and offers a unique pedigree. 83C also offers strong \$ indexes and a -3.3 birth weight EPD.



# BRED HEIFERS



**LOT 35**



**LOT 36**

## 35 PVF FOOL'S DELITE 73C

X4221485 • 8/14/15 • Polled • 73C • Red w/ White Marks

TPS CORONET LEADER 21ST

**SIRE** FSF JAZZ LEADER 918 ET

JAKE'S JAZZY 250J

JSF MASTER OF JAZZ 22U X

**DAM** JSF FOOL'S DELITE 2X

SULL FOOL'S DELITE 8070 ET

CED	BW	WW	YW	MK	TM	CEM	ST	\$CEZ	\$BMI	\$F
11	1.1	51	58	8	34	0	10	39.08	107.7	52.23

Exposed to MURIDALE CONTROL. Due late March 2018. This is a powerful good heifer out of the Nobody's Fool cow family. She is deep and wide. The Leader bull saved the best for last as he made quite a mark on our herd and this heifer is the last calf born here sired by Leader. This heifer should be on everybody's list come sale day.

## 36 PVF BLACK BELLE 75C

xAR4222249 • 9/6/15 • Polled • 75C • Black

JAKE'S PROUD JAZZ 266L

**SIRE** JSF MCCOY 39Z

WR SHADOW MO 644

JAKE'S PROUD JAZZ 266L

**DAM** JSF BLUE BELLE 9725

PUREBRED ANGUS

CED	BW	WW	YW	MK	TM	CEM	ST	\$CEZ	\$BMI	\$F
13	-1.9	46	51	22	45	6	4	47.49	137.70	48.32

Exposed to MURIDALE CONTROL. Due early March 2018. When we bought the fall calving herd from Jungles there were 2 incredible blue cows in the group. We bred those cows back to McCoy and 9712 promptly raised the Champion Plus bull at the 2017 NWSS and 9725 had this outstanding heifer. While 75C could have helped herself with a better photo, she is a great example of what the Shorthorn x Angus offers the beef industry.

# 37 PVF ROYAL ROSE 14D

X4231515 • 1/30/16 • Polled • 14D • Roan

STUDER'S TAYLOR MADE 7Y

**SIRE** LEVELDALE RINGO 337A

LEVELDALE ROSEWOOD 809U

FSF JAZZ LEADER 918 ET

**DAM** PVF ROYAL ROSE 23Y

JSF ROYAL ROSE 135W

CED	BW	WW	YW	MK	TM	CEM	ST	sCEZ	sBMI	\$F
13	-1.4	51	60	15	40	3	12	46.69	108.53	44.98

Bred A.I. on 5/10 to JSF MCCOY. Due 2/17/18. A long and extended Ringo daughter that is out of a maternal sister to PVF Commodore, our high selling bull that sold to the Gipe family from California in the bull sale this past spring. This one mated back to McCoy should work well.



# 38 PVF STYLIST 33D

X4231533 • 2/12/16 • Polled • 33D • Red

STUDER'S TAYLOR MADE 7Y

**SIRE** LEVELDALE RINGO 337A

LEVELDALE ROSEWOOD 809U

FSF JAZZ LEADER 918 ET

**DAM** PVF STYLIST 3A

PVF STYLIST SP 14X

CED	BW	WW	YW	MK	TM	CEM	ST	sCEZ	sBMI	\$F
11	-0.8	43	55	12	34	2	10	42.05	88.29	45.49

Bred A.I. on 5/15 to JSF MCCOY. Due 2/21/18. While you may look at this photo and dismiss her, she really is a nice moderate and complete heifer out of one of the more productive cow families here in the valley.



# 39 PVF DAISY MAE 68D

xAR4233436 • 4/4/16 • Polled • 68D • Red

STUDER'S TAYLOR MADE 7Y

**SIRE** LEVELDALE RINGO 337A

LEVELDALE ROSEWOOD 809U

JSF SIR PATRICK 42U

**DAM** PVF DAISY MAE 37Y

DLF DAISY MAE RALSTON9R47

CED	BW	WW	YW	MK	TM	CEM	ST	sCEZ	sBMI	\$F
8	2.9	70	94	16	51	-3	11	22.50	109.92	58.62

Exposed to MURIDALE CONTROL. Due early March 2018. This 7/8 blood Shorthorn Plus heifer sired by Ringo offers extra power and performance with lots of rib shape and volume and high growth EPD's. Progeny will be purebred when mated to a purebred bull.



# BRED HEIFERS



## 40 PVF CORONITA 24D

X4231525 • 2/1/16 • Polled • 24D • Red

MURIDALE HUEY 8U ET

**SIRE** BALMORAL OAKS EAGLE 9X

BALMORAL OAKS DORIS 1U

RB EAGLE 226TH

**DAM** BYLAND CORONITA 8E10

BYLAND CORONITA 5GR86

CED	BW	WW	YW	MK	TM	CEM	ST	sCEZ	sBMI	sF
8	2.2	49	53	19	44	8	12	31.12	131.01	53.26

Bred A.I. on 5/10 to JSF MCCOY. Due 2/17/18. Another Eagle daughter that is long and smooth in a little bigger frame. Study the \$ Indexes on this one as she goes back to a solid Byland bred cow.



## 41 PVF PRIMROSE 25D

X4231526 • 2/1/16 • Polled • 25D • Roan

MURIDALE HUEY 8U ET

**SIRE** BALMORAL OAKS EAGLE 9X

BALMORAL OAKS DORIS 1U

JSF SIR PATRICK 42U

**DAM** PVF PRIMROSE 03Y

PVF MISS PRIMROSE 06W

CED	BW	WW	YW	MK	TM	CEM	ST	sCEZ	sBMI	sF
5	2.9	58	65	19	47	0	11	18.96	128.05	56.55

Exposed to MURIDALE CONTROL. Due early April 2018. A deep bodied, stout made heifer that much like the rest of the Eagle daughters is maternal and big footed. This will make a moderate framed easy doing cow.



## 42 PVF POLLY 45D

4232687 • 3/6/16 • Horned • 45D • Red w/ White Marks

MURIDALE HUEY 8U ET

**SIRE** BALMORAL OAKS EAGLE 9X

BALMORAL OAKS DORIS 1U

WOLF RIDGE COMMAND C19

**DAM** WOLF RIDGE POLLY 142ND

WOLF RIDGE POLLY 134S

CED	BW	WW	YW	MK	TM	CEM	ST	sCEZ	sBMI	sF
10	0.7	51	59	20	45	4	9	36.03	126.75	54.55

Bred A.I. on 5/15 to JSF MCCOY. Due 2/21/18. A moderate framed, big bodied, easy doing Eagle daughter out of an outstanding Kaper bred cow. She has an outstanding EPD profile and \$ Indexes.



## 43 PVF HELIANTHUS 52D

X4232689 • 3/18/16 • Polled • 52D • Roan

MURIDALE HUEY 8U ET

**SIRE** BALMORAL OAKS EAGLE 9X

BALMORAL OAKS DORIS 1U

ROSA'S COMMANDS 05

**DAM** WOLF RIDGE HELIANTHUS 42T

WOLF RIDGE HELIANTHUS 29P

CED	BW	WW	YW	MK	TM	CEM	ST	sCEZ	sBMI	sF
10	1.7	45	46	20	42	4	14	37.51	125.31	49.18

Exposed to MURIDALE CONTROL. Due early April 2018. Study the pedigree on this heifer as she is a Balmoral Oaks Eagle out of the dam of Wolf Ridge Red Commander and Wolf Ridge Frontline, the main herd sire for Gary Kaper from IL. It keeps getting better when you add the mating to Muridale Control.



## 44 PVF CINDY 48D

X4232684 • 3/11/16 • Polled • 48D • Roan

MURIDALE BUSTER 14K

**SIRE** MURIDALE MURANGO 18X

MURIDALE IDA 6P

WOLF RIDGE PIONEER P108S

**DAM** WOLF RIDGE CINDY 50Y

WOLF RIDGE CINDY 15TH

CED	BW	WW	YW	MK	TM	CEM	ST	sCEZ	sBMI	\$F
7	1.9	51	53	11	37	4	11	29.06	114.94	50.98

Bred A.I. on 5/15 to JSF MCCOY. Due 2/21/18. A moderate framed Murango that is smooth made and offers extra depth and body. I think a lot of this heifer with a strong jaw and a feminine head. This is a good heifer.



## 45 PVF PRINCESS 63D

X4233083 • 3/30/16 • Polled • 63D • Roan

MURIDALE BUSTER 14K

**SIRE** MURIDALE MURANGO 18X

MURIDALE IDA 6P

WOLF RIDGE HIGH LEVEL

**DAM** WOLF RIDGE PRINCESS 71P

WOLF RIDGE PRINCESS 58L

CED	BW	WW	YW	MK	TM	CEM	ST	sCEZ	sBMI	\$F
6	3.8	58	60	18	47	4	11	24.39	137.39	53.26

Bred A.I. on 5/15 to JSF MCCOY. Due 2/21/18. Another Murango heifer that is long and extended with a big hip in a slightly bigger frame. Her dam 71P weaned off another calf this year at 14. Longevity and production built in here.



## 46 PVF POLLY 64D

4233084 • 4/1/16 • Horned • 64D • Roan

MURIDALE BUSTER 14K

**SIRE** MURIDALE MURANGO 18X

MURIDALE IDA 6P

EIONMOR ULTRA 8C

**DAM** WOLF RIDGE POLLY 118P

WOLF RIDGE POLLY 85TH

CED	BW	WW	YW	MK	TM	CEM	ST	sCEZ	sBMI	\$F
7	2.6	43	44	14	35	2	13	29.22	109.13	47.43

Exposed to MURIDALE CONTROL. Due early April 2018. A moderate framed heifer out of an Ultra 8C daughter which offers a mostly Canadian pedigree. More longevity and calving bred into this one.



## 47 PVF PRINCESS 65D

X4233085 • 4/3/16 • Polled • 65D • Roan

MURIDALE BUSTER 14K

**SIRE** MURIDALE MURANGO 18X

MURIDALE IDA 6P

ROSA'S COMMANDS 05

**DAM** WOLF RIDGE PRINCESS 85T

WOLF RIDGE PRINCESS 71P

CED	BW	WW	YW	MK	TM	CEM	ST	sCEZ	sBMI	\$F
9	0.4	49	43	18	42	6	14	37.72	133.10	48.90

Exposed to MURIDALE CONTROL. Due early April 2018. Another heifer out of the Princess cow family from Gary Kaper. The dam of 65D is a maternal sib to Lot 45. Between here and Kaper this Princess cow family had 5 generations in production this summer.



# BRED HEIFERS



**LOT 48**



**LOT 49**

## 48 BYLAND ELLEN 6RX71

X4239809 • 3/16/16 • Polled • 6B71 • Red w/ White Marks

AR SU LU MASTERPLAN 355

**SIRE** LEVELDALE ROLEX 276Z ET

LEVELDALE ROSEWOOD 606S

JSF RELOAD 32T X

**DAM** BYLAND ELLEN 0R52

BYLAND ELLEN 2TP82

CED	BW	WW	YW	MK	TM	CEM	ST	sCEZ	sBMI	sF
2	1.8	54	77	23	50	3	9	7.02	99.49	52.88

Bred A.I. on 5/8 to JSF GAUGE. Due 2/12/18. Outstanding bred heifer her, her maternal brother is Byland Top Gun, herd sire for Waukaru Farms. Great set of balanced EPD's. The Rolex daughters are stylish and impressive as young cows.

## 49 BYLAND GOLDENCHAIN 6RX47

X4239785 • 3/12/16 • Polled • 6B47 • Red

AR SU LU MASTERPLAN 355

**SIRE** LEVELDALE ROLEX 276Z ET

LEVELDALE ROSEWOOD 606S

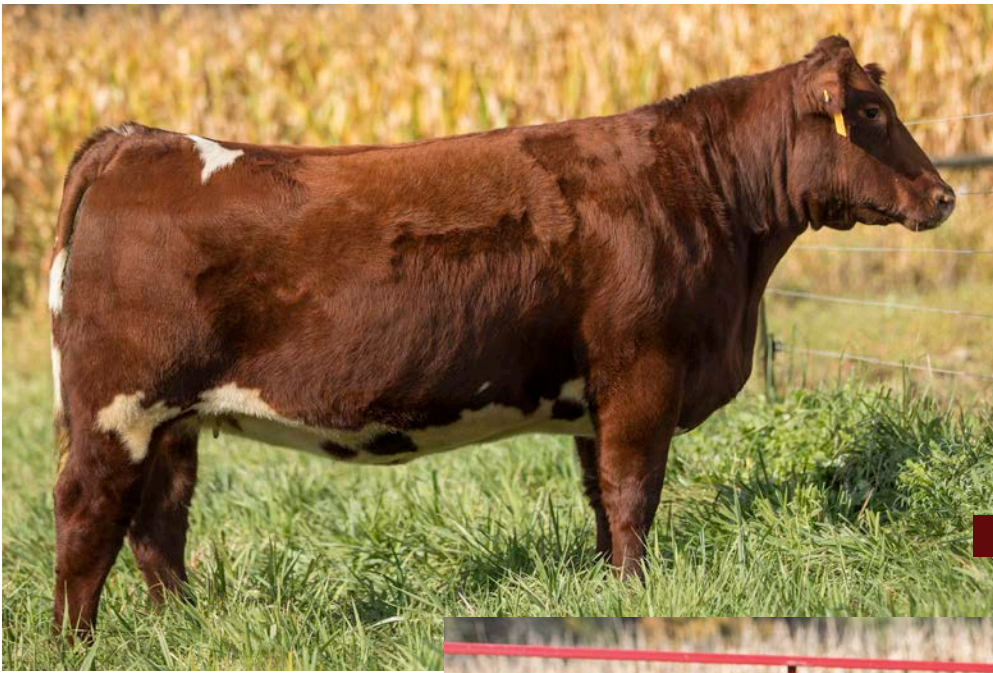
JAKE'S PROUD JAZZ 266L

**DAM** JSF GOLDEN CHAIN 48X

RB GOLDEN CHAIN 146TH ET

CED	BW	WW	YW	MK	TM	CEM	ST	sCEZ	sBMI	sF
4	2.4	51	71	17	42	4	5	15.16	97.46	49.40

Bred A.I. on 4/30 to BYLAND GLOBAL. Due 2/4/18. A deep ribbed and big volume Rolex daughter. Rolex adds so much depth and style. Her dam came from the Jungles herd and has produced a good one every year. A solid investment here!



**LOT 50**



**LOT 51**

**50 BYLAND BONNIE BUD 6RX31**  
 X4239769 • 3/6/16 • Polled • 6B31 • Red w/ White Marks

AR SU LU MASTERPLAN 355  
**SIRE** LEVELDALE ROLEX 276Z ET  
 LEVELDALE ROSEWOOD 606S  
 JSF RELOAD 32T X  
**DAM** BYLAND BONNIE BUD 1R65  
 BYLAND BONNIE BUD 5GR50

CED	BW	WW	YW	MK	TM	CEM	ST	sCEZ	sBMI	sF
2	2.9	58	80	22	51	3	12	7.29	100.87	54.48

Bred A.I. on 5/8 to JSF GAUGE. Due 2/12/18. A really attractive, big ribbed Rolex daughter with great performance. Her maternal half sib sells as lot 3.

**51 BYLAND AUGUSTA 6RX26**  
 X4239764 • 3/4/16 • Polled • 6B26 • Red

AR SU LU MASTERPLAN 355  
**SIRE** LEVELDALE ROLEX 276Z ET  
 LEVELDALE ROSEWOOD 606S  
 FSF PROUD JAZZ 855  
**DAM** BYLAND AUGUSTA 0J6  
 BYLAND AUGUSTA 8RW67

CED	BW	WW	YW	MK	TM	CEM	ST	sCEZ	sBMI	sF
4	2.4	42	51	19	39	3	8	17.47	96.15	43.61

Exposed to BYLAND HOT BONANZA. Due mid April 2018. A stylish red, polled Rolex daughter out of a Jazz cow.

# BRED HEIFERS



## 52 BYLAND AUGUSTA 6RX27

X4239765 • 3/6/16 • Polled • 6B27 • Red

AR SU LU MASTERPLAN 355

**SIRE** LEVELDALE ROLEX 276Z ET

LEVELDALE ROSEWOOD 606S

FSF PROUD JAZZ 855

**DAM** BYLAND AUGUSTA 0J65

BYLAND AUGUSTA 8RW83 ET

CED	BW	WW	YW	MK	TM	CEM	ST	sCEZ	sBMI	\$F
4	2.4	45	57	17	39	2	8	15.35	91.60	44.77

Bred A.I. on 5/5 to JSF GAUGE. Due 2/9/18. Another red, polled Rolex daughter out of a Jazz cow that raises a great calf each year.



## 53 BYLAND CINDYBEAUTY 6RX51

X4239789 • 3/12/16 • Polled • 6B51 • Roan

AR SU LU MASTERPLAN 355

**SIRE** LEVELDALE ROLEX 276Z ET

LEVELDALE ROSEWOOD 606S

DFS RED RIDER 925 ET

**DAM** BYLAND CINDY BEAUTY 5RR17 ET

BYLAND CINDY BEAUTY 6GD60

CED	BW	WW	YW	MK	TM	CEM	ST	sCEZ	sBMI	\$F
0	6.2	54	71	21	48	2	8	2.50	94.37	49.38

Bred A.I. on 5/6 to JSF GAUGE. Due 2/10/18. A great bred heifer here in this Rolex x Cindy Beauty that is truly an eye catcher. We love her dam that is now 12 years old. We feel that this female will be a solid investment.



## 54 BYLAND ELLEN 6SC90

4239827 • 3/25/16 • Horned • 6B90 • Red w/ White Marks

EIONMOR MARQUIS 86G

**SIRE** STUDER'S SNAPCHAT 22B

MURIDALE RED JAY 22Z

JSF RELOAD 32T X

**DAM** BYLAND ELLEN 2R80

BYLAND ELLEN 8RW70

CED	BW	WW	YW	MK	TM	CEM	ST	sCEZ	sBMI	\$F
5	1.3	60	76	20	50	1	12	17.42	115.69	56.49

Bred NS on 7/21 to BYLAND HOT BONANZA. Due 4/27/18. What a tank; typical of the Snapchat cattle. Natural depth and volume with style and grace. Her dam is a great young cow; otherwise we would not be offering this one for sale.

## 55 BYLAND JENNY 6SC112

X4239853 • 4/25/16 • Polled • 6112 • Red w/ White Marks

EIONMOR MARQUIS 86G

**SIRE** STUDER'S SNAPCHAT 22B

MURIDALE RED JAY 22Z

JSF REAL WORLD 16R X

**DAM** BYLAND JENNY 2RW37

BYLAND JENNY 4E112

CED	BW	WW	YW	MK	TM	CEM	ST	sCEZ	sBMI	\$F
10	-1.3	46	50	21	44	4	12	37.75	127.04	48.50

Bred A.I. on 5/17 to JSF WALL STREET. Due 2/21/18. This heifer is from the same cow family that produced Global. Her dam is one of our very best Real World daughters. This heifer could be a sleeper. She has our approval!



## 56 BYLAND ELLEN 6U114

X4239855 • 4/27/16 • Polled • 6114 • Red

SASKVALLEY TRADITION 106T

**SIRE** STUDER'S UNIVERSAL 10B

DSF PRIMROSE 55S

SBF PATENTS IMAGE 43Y

**DAM** BYLAND ELLEN 3P13

BYLAND ELLEN 0R26

CED	BW	WW	YW	MK	TM	CEM	ST	sCEZ	sBMI	\$F
3	4.3	82	105	14	55	4	12	4.06	134.52	69.35

Bred A.I. on 5/28 to JSF GAUGE. Due 3/4/18. Performance female here; she ranks in the top 1% of the breed for weaning and yearling EPD. She also ranks in the top 3% TM, top 1% \$F, and top 10% BMI. The Universal daughters are impressive!



## 57 BYLAND ELLEN 6U58

X4239796 • 3/13/16 • Polled • 6B58 • Red w/ White Marks

SASKVALLEY TRADITION 106T

**SIRE** STUDER'S UNIVERSAL 10B

DSF PRIMROSE 55S

SBF PATENTS IMAGE 43Y

**DAM** BYLAND ELLEN 3P48

BYLAND ELLEN 0BB98

CED	BW	WW	YW	MK	TM	CEM	ST	sCEZ	sBMI	\$F
1	5.9	82	105	14	55	1	9	-1.69	128.75	68.35

Bred A.I. on 5/26 to BYLAND GLOBAL. Due 3/2/18. Another performance female here. There is no secret, this Ellen x Universal is powerful. She ranks in the top 1% of the breed for weaning and yearling EPD as well as \$F.



# BRED HEIFERS



**LOT 58**



**LOT 59**

## 58 BYLAND AUGUSTA BRAE 6M46

X4239784 • 3/12/16 • Polled • 6B46 • Roan

JAKE'S PROUD JAZZ 266L

**SIRE** JSF MCCOY 39Z

WR SHADOW MO 644

JSF GAUGE 137W

**DAM** BYLAND AUGUSTA BRAE 2G22

BYLAND AUGUSTA BRAE 8E2

CED	BW	WW	YW	MK	TM	CEM	ST	sCEZ	\$BMI	\$F
12	0.3	50	47	23	48	8	9	46.99	155.30	50.97

Bred A.I. on 4/28 to STUDER'S TAYLOR MADE. Due 2/2/18. Special heifer here. A McCoy on a Gauge. This cross just flat works! The dam to this heifer sells as lot 7. This female should stay at Byland. We have taken the heart of our bred heifer pen to offer the good ones. She is easy fleshing with all the body from Gauge and style from McCoy. Her \$BMI is 155 which ranks in the top 1%.

## 59 BYLAND VICTORIA 6M100

X4239837 • 4/2/16 • Polled • 6100 • Red

JAKE'S PROUD JAZZ 266L

**SIRE** JSF MCCOY 39Z

WR SHADOW MO 644

MEL-BAR RODEO DRIVE 347

**DAM** BYLAND VICTORIA 4RD107

BYLAND VICTORIA 2G16

CED	BW	WW	YW	MK	TM	CEM	ST	sCEZ	\$BMI	\$F
13	-0.5	59	71	21	51	8	8	43.30	146.98	56.14

Bred A.I. on 5/11 to STUDER'S TAYLOR MADE. Due 2/15/18. Invest here with confidence. You couldn't ask for more body and depth and still have style and femininity like she does. Her dam is a daughter of Mel-Bar Rodeo Drive 347. Great set of EPD's here; low birth and high growth. She ranks in the top 3% of the breed for \$BMI.



**LOT 60**



**LOT 61**

**60 BYLAND ELLEN 6M15**

X4239749 • 2/16/16 • Polled • 6B15 • Roan

JAKE'S PROUD JAZZ 266L

**SIRE** JSF MCCOY 39Z

WR SHADOW MO 644

BYLAND EAGLE'S RELOAD

**DAM** BYLAND ELLEN 2ER93

BYLAND ELLEN 0RW123

CED	BW	WW	YW	MK	TM	CEM	ST	\$CEZ	\$BMI	\$F
18	-7	45	54	24	47	10	10	64.41	150.54	50.03

Bred A.I. on 4/16 to **STUDER'S TAYLOR MADE**. Due 1/21/18. A bit smaller framed McCoy daughter, but quite a tank. She ranks in the top 1% for \$CEZ and \$ BMI. Great female.

**61 BYLAND AUGUSTA 6M10**

X4239744 • 2/11/16 • Polled • 6B10 • Red

JAKE'S PROUD JAZZ 266L

**SIRE** JSF MCCOY 39Z

WR SHADOW MO 644

JSF GAUGE 137W

**DAM** BYLAND AUGUSTA 4G3

BYLAND AUGUSTA 1R103

CED	BW	WW	YW	MK	TM	CEM	ST	\$CEZ	\$BMI	\$F
13	-0.5	60	63	25	55	8	9	44.73	162.67	56.18

Bred A.I. on 6/4 to **BYLAND GLOBAL**. Due 3/11/18. A growthy McCoy with a high \$BMI. Low birth with excellent maternal traits. Her dam sells as lot 5.

# BRED HEIFERS



## 62 BYLAND CINDY BEAUTY 6M75

4242946 • 3/17/16 • Horned • 6B75 • Red w/ White Marks

JAKE'S PROUD JAZZ 266L

**SIRE** JSF MCCOY 39Z

WR SHADOW MO 644

BYLAND DOUBLE GOLD

**DAM** BYLAND CINDY BEAUTY 1DG57

BYLAND CINDY BEAUTY 9E7

CED	BW	WW	YW	MK	TM	CEM	ST	\$CEZ	\$BMI	\$F
12	-1.4	48	58	26	50	8	10	44.80	139.82	47.88

Bred A.I. on 5/31 to JSF GAUGE. Due 3/7/18. A low birth, high \$ BMI McCoy daughter. This is a big volume female just like her dam.



## 63 BYLAND ELLEN 6M76

X4239812 • 3/18/16 • Polled • 6B76 • Red

JAKE'S PROUD JAZZ 266L

**SIRE** JSF MCCOY 39Z

WR SHADOW MO 644

CF BIG BROWN X

**DAM** BYLAND ELLEN 0BB88

BYLAND ELLEN 7OL101

CED	BW	WW	YW	MK	TM	CEM	ST	\$CEZ	\$BMI	\$F
9	0.3	55	63	19	47	7	7	33.44	143.07	52.33

Bred A.I. on 5/18. to JSF GAUGE. Due 2/22/18. The McCoy's are making great cows, which she will be also. Great numbers with low birth weight and high \$BMI. Her dam is a CF Big Brown daughter that has produced well for us. This heifer is much better than the photo indicates. Don't overlook this one.



## 64 BYLAND VICTORIA 6M118

4239859 • 5/4/16 • Horned • 6118 • Red

JAKE'S PROUD JAZZ 266L

**SIRE** JSF MCCOY 39Z

WR SHADOW MO 644

JSF GAUGE 137W

**DAM** BYLAND VICTORIA 2G16

BYLAND VICTORIA 8V92

CED	BW	WW	YW	MK	TM	CEM	ST	\$CEZ	\$BMI	\$F
14	-0.8	58	63	24	53	8	9	50.19	157.78	55.22

Bred NS on 7/20 to BYLAND HOT BONANZA. Due 4/26/18. Here is another McCoy on a Gauge. Her Gauge dam is one of our favorites. You could hardly find a more balanced set of EPD's. Low birth weight and high growth. She ranks in the top 1% for \$BMI, top 3% for \$CEZ, and top 25% for \$F. Really?



## 65 BYLAND ELLEN 6G54

4239792 • 3/13/16 • Horned • 6B54 • Red

SBR TSUNAMI 20T

**SIRE** JSF GAUGE 137W

KL MINA STAR 1051

SBF PATENTS IMAGE 43Y

**DAM** BYLAND ELLEN 4P86

BYLAND ELLEN 0BB46

CED	BW	WW	YW	MK	TM	CEM	ST	sCEZ	sBMI	\$F
9	1.8	73	80	23	59	5	10	28.31	158.32	62.91

Bred A.I. on 5/5 to **STUDER'S TAYLOR MADE**. Due 2/9/18. Her picture doesn't do her justice. She is a performance tank. Study her numbers. This will make a cow supreme. Her dam sells as lot 13.



## 66 BYLAND KATRINA 6G78

4239814 • 3/19/16 • Horned • 6B78 • Red

SBR TSUNAMI 20T

**SIRE** JSF GAUGE 137W

KL MINA STAR 1051

JSF RELOAD 32T X

**DAM** BYLAND KATRINA 0R62

BYLAND KATRINA OALL1

CED	BW	WW	YW	MK	TM	CEM	ST	sCEZ	sBMI	\$F
10	0.5	60	65	29	60	6	15	34.76	150.57	58.88

Bred A.I. on 5/8 to **JSF MCCOY**. Due 2/12/18. A really big volume, deep bodied Gauge daughter. You could hardly write a better, more balanced set of EPD's and \$ values than this female has. Her maternal half-sister sells as lot 18.



## 67 BYLAND VICTORIA 6G103

X4239845 • 4/4/16 • Polled • 6103 • Red

SBR TSUNAMI 20T

**SIRE** JSF GAUGE 137W

KL MINA STAR 1051

BYLAND VICTORY 1TP104

**DAM** BYLAND VICTORIA 8V92

BYLAND VICTORIA 5RD22

CED	BW	WW	YW	MK	TM	CEM	ST	sCEZ	sBMI	\$F
10	2	59	55	24	53	7	13	35.81	149.76	56.85

Bred A.I. on 5/15 to **JSF HOT WIRE**. Due 2/19/18. Another big volume, deep bodied, soggy Gauge with a great set of numbers. Her dam is a great cow. She is the kind of female you can build a great cow herd with.





## 68 BYLAND GLOBAL 5M10

X4224565 • 2/10/15 • Polled • 5B10 • Roan

JAKE'S PROUD JAZZ 266L

**SIRE** JSF MCCOY 39Z

WR SHADOW MO 644

JSF GAUGE 137W

**DAM** BYLAND JENNY 3G33

BYLAND JENNY 1RW32

CED	BW	WW	YW	MK	TM	CEM	ST	sCEZ	sBMI	sF
16	-1.3	50	49	27	52	9	4	59.64	169.22	48.25

68A - 5 units    68B - 5 units    68C - 5 units    68D - 5 units



## 69 JSF MCCOY 39Z

X4190259 • 3/4/12 • Polled • 39Z • Roan

JAKE'S PROUD LEADER 243H

**SIRE** JAKE'S PROUD JAZZ 266L

JAKE'S JAZZY 250J

GS ALL STAR'S MORSEMAN

**DAM** WR SHADOW MO 644

WR MAX'S SHADRA 751

CED	BW	WW	YW	MK	TM	CEM	ST	sCEZ	sBMI	sF
16	-2.6	47	53	23	47	8	5	57.84	153.80	48.14

69A - 10 units    69B - 10 units    69C - 10 units  
69D - 10 units    69E - 10 units



## 70 LEVELDALE RINGO 337A

X4206214 • 3/26/13 • Polled • 337A • Red w/ White Marks

SASKVALLEY RAMROD 155R

**SIRE** STUDER'S TAYLOR MADE 7Y

DSF COUNTRY DANCER 42U

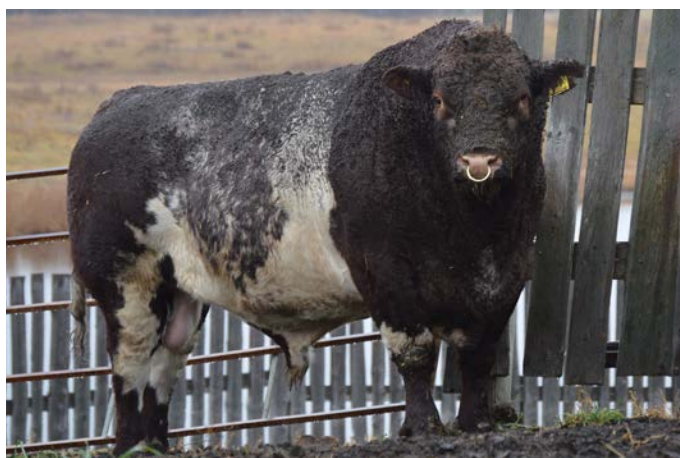
PEAK VIEW MOET P1M 6001 ET

**DAM** LEVELDALE ROSEWOOD 809U

EF ROSEWOOD 1193

CED	BW	WW	YW	MK	TM	CEM	ST	sCEZ	sBMI	sF
11	0.7	63	84	14	45	2	9	36.28	110.15	54.21

70A - 10 units    70B - 10 units



## 71 BALMORAL OAKS EAGLE 9X

X4215675 • 4/9/10 • Polled • 9X • Roan

SASKVALLEY BONANZA 219M

**SIRE** MURIDALE HUEY 8U ET

MURIDALE SODA 25R

MURIDALE LUDWIG 86P

**DAM** BALMORAL OAKS DORIS 1U

BALMORAL OAKS DORIS 1H

CED	BW	WW	YW	MK	TM	CEM	ST	sCEZ	sBMI	sF
9	1.5	47	51	20	44	5	9	34.19	127.68	54.52

71A - 10 units    71B - 10 units  
71C - 10 units    71D - 10 units

# GENERAL SALE INFORMATION

**FLUSHING:** Paint Valley Farms retains a flush on all females selling from their program. The flush will be at our expense and the buyer's convenience with a guarantee of six grade one embryos.

**TERMS AND CONDITIONS:** Terms of the sale are cash or check and made payable to Aegerter Marketing Services, Inc., immediately following the sale and before cattle are removed from the premises.

**BILLED ACCOUNTS:** All billed accounts are due within 10 days following the date of the sale. At 10 days, a two percent service charge will be added to the unpaid balance and an additional two percent will be added every 30 days thereafter unless previous arrangements have been made with the owners.

**PHONE BIDS:** Phone bids will be handled in a most confidential manner. If you are unable to attend the sale personally, simply contact a representative of the sale far enough in advance prior to sale day. They will be able to assist you at ringside on sale day.

**LIABILITY:** Each animal will be at the buyer's risk as soon as sold, but will be cared for by the sellers for a reasonable amount of time. Neither the owners, employees, auctioneer, sale manager nor other affiliated personnel can be responsible for any accidents, but they will make every effort to provide for the safety and comfort of those attending.

**TRUCKING:** Transportation available to all points in the continental United States. Every effort will be made to provide reliable and affordable transportation for animals purchased.

**BREEDING INFORMATION:** All animals sell under the terms and conditions of the American Shorthorn Association Standard Breeding Guarantee. Bred females have been pregnancy examined safe in calf by a licensed veterinarian. Any updated breeding information will be made available on sale day.

**HEALTH:** Each animal will be represented by a state approved health certificate for interstate shipment. Buyers should make themselves aware of the health requirements for their respective states. All cows tested negative for TB & Brucellosis. All the cattle have been vaccinated and wormed.

**GENETIC CONDITIONS:** All animals selling will be free of any known Genetic Conditions unless stated otherwise. Any updates will be available on sale day.

Announcements made from the auction block take precedence over all printed material in this catalog.

**INSURANCE** will be available at the settlement desk upon conclusion of the sale. Announcements made from the auction block take precedence over all printed material in this catalog.





Aegerter Marketing Services, Inc.  
Jeff Aegerter  
520 South Evergreen Drive  
Seward, NE 68434

**DECEMBER 9, 2017**

**A MATERNAL  
EVENT**

**Paint Valley Farms Sale Facility | Millersburg, Ohio**

